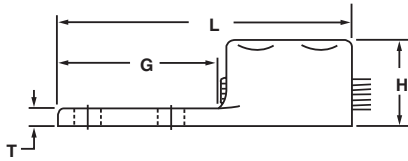
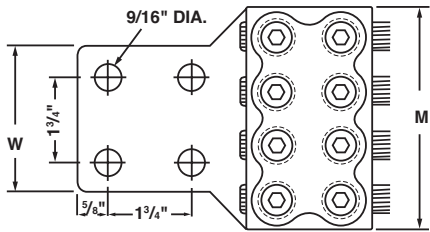


Bronze Vi-Tite Terminal Lugs - Four Hole Tongue with Tandem Set Screws

Type VVL4

For use with four copper conductors

- Manufactured from high strength copper alloy for maximum conductivity and corrosion resistance
- Heavy duty terminals used for joining a wide range of copper conductors to equipment pads or bus bars
- Bronze screw and pressure bar provide uniform clamping pressure on conductor
- Four hole mounting pads allow for maximum surface contact in heavy duty applications
- Tandem set screws provide superior mechanical performance
- Annular serrations in conductor grooves provide improved mechanical performance
- Inspection hole allows for visual confirmation of proper cable insertion
- Hex head screws can be furnished on request by adding suffix “-HH” to catalog number
- For tin plating, suffix catalog number with “-TN”



CATALOG NUMBER	CONDUCTOR RANGE	APPROXIMATE DIMENSIONS (IN.)						MTG. BOLT SIZE	HEX SIZE
		L	M	W	H	G	T		
VVL4-21918	3/0 Str. - 350 kcmil	5.50	3.88	3.00	1.38	3.13	.38	1/2	3/8
VVL4-21919	300 - 500 kcmil	5.75	4.75	3.50	1.81	3.13	.50		3/8
VVL4-21921	500 - 800 kcmil	6.13	5.63	4.00	1.81	3.13	.50		3/8
VVL421925	700 - 1000 kcmil	6.63	6.25	4.00	2.06	3.25	.50		3/8
VVL4-21926	1000 - 1500 kcmil	7.75	8.00	4.50	2.31	3.13	.63		1/2
VVL4-21928	1500 - 2000 kcmil	8.00	9.00	5.00	2.69	3.13	.75		1/2